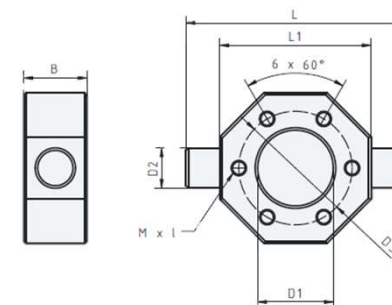


Kardanadapter LB-KA



Artikel-Nr.	D1 ^{G7} [mm]	D2 ^{f8} [mm]	D3 ^{+/-0,1} [mm]	L [mm]	L1 [mm]	B [mm]	M x l [mm]	Gewicht [kg]	Passende Muttern
LB-KA-15	15	10	22	55	35	15	M2,5 x 5	0,25	M-TR-5x1,5-XX-XX-F2 / M-TR-5x3P1,5-XX-XX-F2 / M-TR-6x2P1-XX-XX-F2
LB-KA-18	318	10	26	58	38	15	M3 x 6	0,25	M-TR-8x1,5-XX-XX-F2
LB-KA-25	25	12	35	70	50	20	M5 x 10	0,26	
LB-KA-25-34	25	12	34	70	50	20	M5 x 10	0,26	M-TR-10x2-XX-XX-F2 / M-TR-10x3-XX-XX-F2 / M-TR-10x3P1,5-XX-XX-F2 / M-TR-10x4P2-XX-XX-F2
LB-KA-26	26	12	38	70	50	20	M5 x 10	0,25	
LB-KA-28	28	12	38	70	50	20	M5 x 10	0,24	M-TR-12x2-XX-XX-F2 / M-TR-12x3-XX-XX-F2 / M-TR-14x3-XX-XX-F2 / M-TR-14x4-XX-XX-F2 / M-TR-16x4-XX-XX-F2 / M-TR-18x4-XX-XX-F2 / M-TR-12x6P3-XX-XX-F2 / M-TR-14x6P3-XX-XX-F2 / M-TR-16x8P4-XX-XX-F2 / M-TR-18x8P4-XX-XX-F2
LB-KA-30	30	16	45	87	60	25	M6 x 12	0,48	
LB-KA-32	32	16	45	85	58	25	M6 x 12	0,42	M-TR-20x4-XX-XX-F2 / M-TR-22x5-XX-XX-F2 / M-TR-24x5-XX-XX-F2 / M-TR-20x8P4-XX-XX-F2 / M-TR-22x10P5-XX-XX-F2 / M-TR-24x10P5-XX-XX-F2
LB-KA-38	38	18	50	95	65	25	M6 x 12	0,51	M-TR-26x5-XX-XX-F2 / M-TR-28x5-XX-XX-F2 / M-TR-30x3-XX-XX-F2 / M-TR-30x4-XX-XX-F2 / M-TR-30x5-XX-XX-F2 / M-TR-30x6-XX-XX-F2 / M-TR-26x10P5-XX-XX-F2 / M-TR-28x10P5-XX-XX-F2 / M-TR-30x12P6-XX-XX-F2
LB-KA-40	40	18	58	105	75	25	M6 x 12	0,72	
LB-KA-45*	45	20	58/65	115	80	30	M6 x 12	0,94	M-TR-32x6-XX-XX-F2 / M-TR-36x6-XX-XX-F2 / M-TR-32x12P6-XX-XX-F2 / M-TR-36x12P6-XX-XX-F2
LB-KA-50*	50	25	68/65	125	85	30	M6/M8 x 12	1,07	
LB-KA-55	55	25	85	165	115	30	M6 x 12	2,21	
LB-KA-60	60	30	95	175	135	40	M8 x 15	4,06	
LB-KA-63	63	30	78	140	100	40	M8 x 15	1,83	M-TR-40x3-XX-XX-F2 / M-TR-40x4-XX-XX-F2 / M-TR-40x5-XX-XX-F2 / M-TR-40x6-XX-XX-F2 / M-TR-40x7-XX-XX-F2 / M-TR-44x7-XX-XX-F2 / M-TR-40x14P7-XX-XX-F2 / M-TR-40x40P8-XX-XX-F2
LB-KA-72	72	40	90	165	115	50	M10 x 16	3,17	M-TR-48x8-XX-XX-F2 / M-TR-50x10-XX-XX-F2 / M-TR-50x3-XX-XX-F2 / M-TR-50x4-XX-XX-F2 / M-TR-50x5-XX-XX-F2 / M-TR-50x6-XX-XX-F2 / M-TR-50x8-XX-XX-F2 / M-TR-52x8-XX-XX-F2
LB-KA-80	80	40	120	215	165	50	M10 x 16	7,36	
LB-KA-85	85	40	105	180	130	50	M10 x 16	3,74	M-TR-60x6-XX-XX-F2 / M-TR-60x7-XX-XX-F2 / M-TR-60x9-XX-XX-F2
LB-KA-95*	95	45	130/140	245	185	50	M12/M16 x 20	8,89	M-TR-70x10-XX-XX-F2

* Mit 2 unterschiedlichen Bohrbildern auf Vor- und Rückseite.